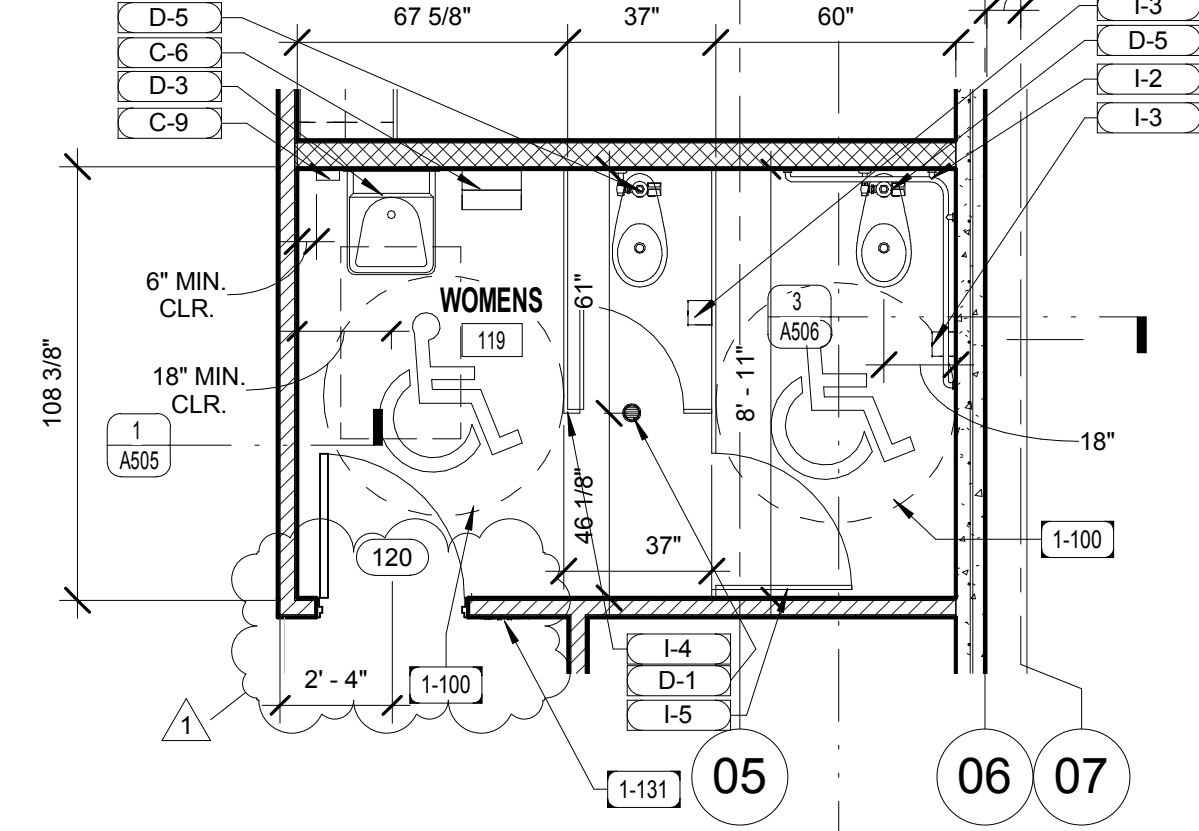
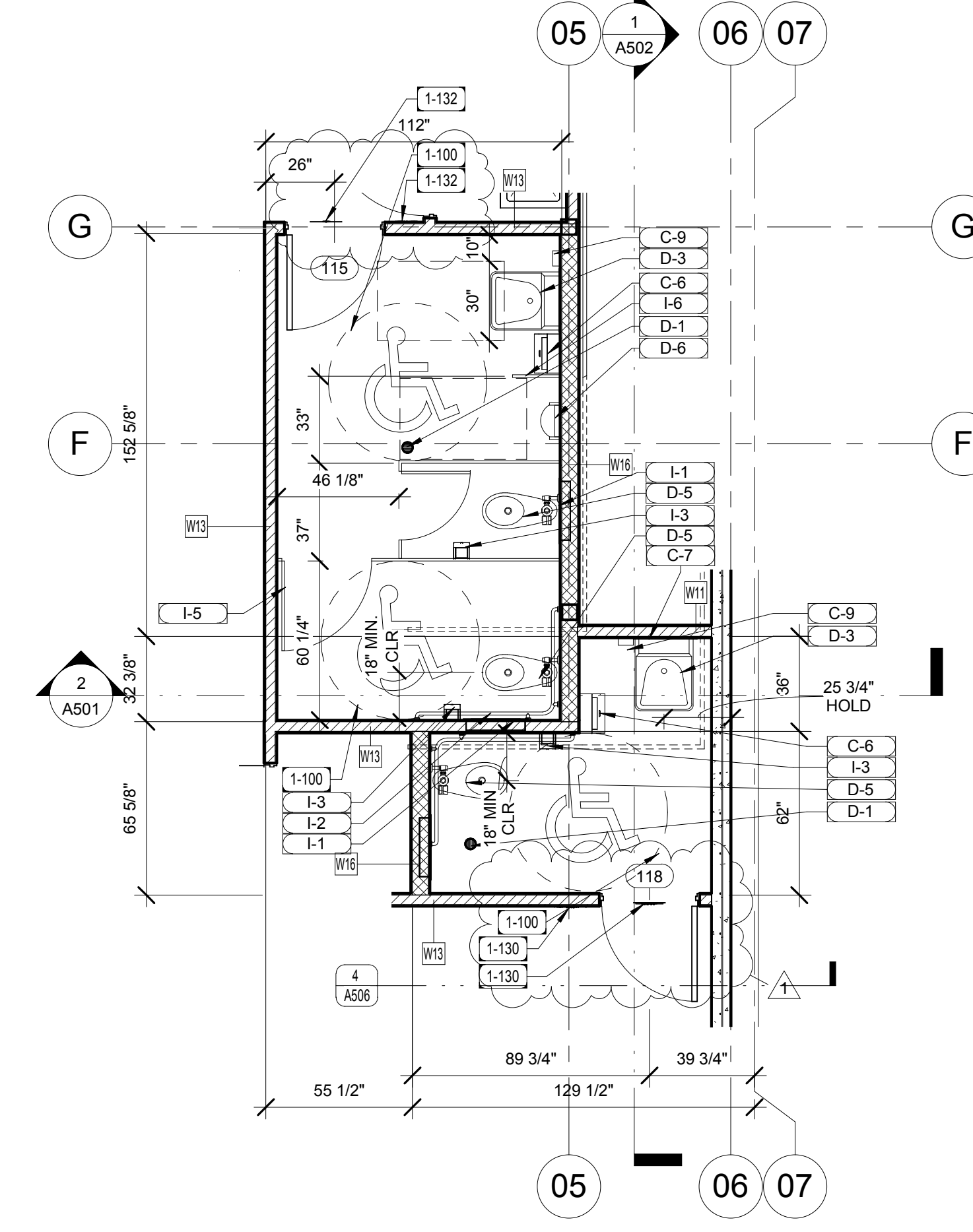


Number	Revision	Date
1	Plan Check #1	8-26-2014
2	Plan Check #2	10-15-2014
4	Plan Addendum # 1	3-2-2015



3 ENLARGED WOMENS & UNISEX FIRST FLR
1/4" = 1'-0"



2 ENLARGED MENS FIRST FLR RR
1/4" = 1'-0"

Key Value	Keynote Legend	Keynote Text
1-100		60" DIAMETER CLEAR TURNING AREA
1-130		DOORWAYS LEADING TO UNISEX TOILET ROOMS SHALL HAVE AN 12 INCH DIAMETER CIRCLE 14 INCH THICK ANCHOR EQUILATERAL TRIANGLE WITH 12 INCH SIDES INSCRIBED AND SUPERIMPOSED ON THE CIRCLE. THE SYMBOL SHALL BE CENTERED ON THE DOOR, 60 INCHES ABOVE THE FLOOR AND IN A COLOR AND CONTRAST DIFFERENT FROM THE DOOR. ALSO, PROVIDE A SEPARATE SIGN ON THE WALL ADJACENT TO THE LATCH SIDE OF THE DOOR (ALLOWING A PERSON TO APPROACH WITHIN 3' OF THE SIGNAGE WITHOUT ENCOUNTERING PROTRUDING OBJECTS OR STANDING WITHIN THE SWING OF THE DOOR) WITH THE INTERNATIONAL SYMBOL OF ACCESSIBILITY AND CORRESPONDING VERBAL DESCRIPTION USING RAISED LETTERING AND GRADE II BRAILLE.
1-131		DOORWAYS LEADING TO WOMENS TOILET ROOMS SHALL HAVE A 12 INCH DIAMETER CIRCLE 14 INCH THICK. THE SYMBOL SHALL BE CENTERED ON THE DOOR, 60 INCHES ABOVE THE FLOOR AND IN A COLOR AND CONTRAST DIFFERENT FROM THE DOOR. ALSO, PROVIDE A SEPARATE SIGN ON THE WALL ADJACENT TO THE LATCH SIDE OF THE DOOR (ALLOWING A PERSON TO APPROACH WITHIN 3' OF THE SIGNAGE WITHOUT ENCOUNTERING PROTRUDING OBJECTS OR STANDING WITHIN THE SWING OF THE DOOR) WITH THE INTERNATIONAL SYMBOL OF ACCESSIBILITY AND CORRESPONDING VERBAL DESCRIPTION USING RAISED LETTERING AND GRADE II BRAILLE.
1-132		DOORWAYS LEADING TO MENS TOILET ROOMS SHALL HAVE AN EQUILATERAL TRIANGLE 14 INCH THICK, 12 INCH SIDES, AND A VERTEX POINTING UPWARD. THE SYMBOL SHALL BE CENTERED ON THE DOOR, 60 INCHES ABOVE THE FLOOR AND IN A COLOR AND CONTRAST DIFFERENT FROM THE DOOR. ALSO, PROVIDE A SEPARATE SIGN ON THE WALL ADJACENT TO THE LATCH SIDE OF THE DOOR (ALLOWING A PERSON TO APPROACH WITHIN 3' OF THE SIGNAGE WITHOUT ENCOUNTERING PROTRUDING OBJECTS OR STANDING WITHIN THE SWING OF THE DOOR) WITH THE INTERNATIONAL SYMBOL OF ACCESSIBILITY AND CORRESPONDING VERBAL DESCRIPTION USING RAISED LETTERING AND GRADE II BRAILLE.
1-133		EACH GRADE-LEVEL EXTERIOR EXIT DOOR SHALL BE IDENTIFIED WITH A TACTILE SIGN WITH THE WORD, EXIT, (ALLOWING A PERSON TO APPROACH WITHIN 3' OF THE SIGNAGE WITHOUT ENCOUNTERING PROTRUDING OBJECTS OR STANDING WITHIN THE SWING OF THE DOOR) USING RAISED LETTERING AND GRADE II BRAILLE. (CIBC 1011.3 AND 1117.6.1)
1-134		PROVIDE THE INTERNATIONAL SYMBOL OF ACCESSIBILITY SIGN AT THE PRIMARY PUBLIC ENTRANCE AND AT EVERY MAJOR JUNCTION ALONG OR LEADING TO AN ACCESSIBLE ROUTE OF TRAVEL. THE SIGN SHALL DIRECT PERSONS TO ACCESSIBLE ENTRANCES AND FACILITIES. MOUNTING HEIGHT FOR SIGNS AT DOORS SHALL BE 60 INCHES FROM THE WALKING SURFACE TO THE CENTERLINE OF THE SIGN. THE SYMBOL SHALL BE PROPORTIONALLY SIMILAR TO THAT SHOWN IN DETAIL 303-S WITH A MINIMUM SIZE OF 6" X 4".
5-280		42" HIGH X 1-1/2" OUTSIDE DIAMETER STEEL PIPE RAILING WITH INTERMEDIATE RAILS SPACED SUCH THAT A 4" DIAMETER SPHERE CANNOT PASS THROUGH.
5-281		36" HIGH X 1-1/2" OUTSIDE DIAMETER STEEL PIPE RAILING WITH INTERMEDIATE RAILS SPACED SUCH THAT A 4" DIAMETER SPHERE CANNOT PASS THROUGH.
6-198		THE UPPER APPROACH AND LOWER TREAD OF EACH STAIR SHALL BE MARKED BY A STRIP OF CLEARLY CONTRASTING COLOR AT LEAST 2" WIDE PLACED PARALLEL TO AND NOT MORE THAN 1" FROM THE NOSE OF THE STAIR LANDING TO ALERT THE VISUALLY IMPAIRED. THE STRIP SHALL BE OF MATERIAL THAT IS AT LEAST AS SLIP RESISTANT AS THE OTHER TREADS OF THE STAIR.
7-00		WATERPROOF DECK COVERING (DECK-ON-TEST WEATHERSEAL DECK SURFACING AS MANUFACTURED BY CROSSFIELD PRODUCTS CORP., RANCHO DOMINGUEZ, CA. (949) 380-1200). CLASS A FIRE RATED PER ICC REPORT NO. ESR-1757. DECK TO BE INSTALLED IN ACCORDANCE WITH MANUFACTURER'S RECOMMENDATIONS BY A CONTRACTOR TRAINED AND APPROVED BY THE MANUFACTURER.
9-40		CONTINUOUS GALVANIZED SHEET METAL WEEP SCREED
9-100		7/8" EXTERIOR CEMENT PLASTER WITH PAPER-BACKED WOVEN WIRE FABRIC LATH (3 COATS MINIMUM). PROVIDE TWO LAYERS OF GRADE 6 PAPER OVER ALL PLYWOOD SHEAR PANEL (USE HIGH RIB LATH AT HORIZONTAL APPLICATIONS)
9-500		NEW BASE CABINET WITH LAMINATED PLASTIC COUNTERTOP AND 4" HIGH SPLASH AND END SPLASH WITH SELF-RIMMING LAVATORY
10-147		STAINLESS STEEL DECK MOUNTED LIQUID SOAP DISPENSER (BRADLEY #6324, OR EQUAL)
15-306		33" X 22" DOUBLE BOWL SELF-RIMMING ENAMELED STEEL KITCHEN SINK WITH 3/4 HP GARAGE DISPOSER
16-885		ILLUMINATED EXIT SIGN WITH BATTERY BACKUP (SEE PLAN FOR DIRECTIONAL ARROWS). ILLUMINATED EXIT SIGN WITH ADDITIONAL LOW LEVEL ILLUMINATED EXIT SIGN MOUNTED DIRECTLY BELOW. BLACK TRIM WITH BLACK STENCIL AND GREEN LETTERS. RATED FOR 20 YEAR LIFE (EVENITE PSL-20-1-B-S)

- KEY NOTE
- SECTION DETAIL HEAD
- INFO
- NUMBER
- SHEET
- DETAIL OR SECTION DETAIL HEAD
- NUMBER
- SHEET
- DOOR TAG (SEE DOOR SCHEDULE)
- WINDOW TAG (SEE WINDOW SCHEDULE)
- WALL TAG
- EQUIPMENT TAG (SEE FULL EQUIPMENT SCHEDULE SHEET)
- LABEL
- CATEGORY
- (E) or (D) Existing or Demo Tag
- PLUMBING FIXTURE TAG (SEE FULL EQUIPMENT SCHEDULE SHEET)
- LABEL
- CATEGORY
- (E) or (D) Existing or Demo Tag
- DETAIL KEYNOTE
- CEILING TAG SEE CEILING SCHEDULE
- EXISTING DOOR TO REMAIN
- EXISTING DOOR TO BE REMOVED
- EXISTING NON-BEARING WALL TO BE REMOVED

Symbols Legend
1/4" = 1'-0"

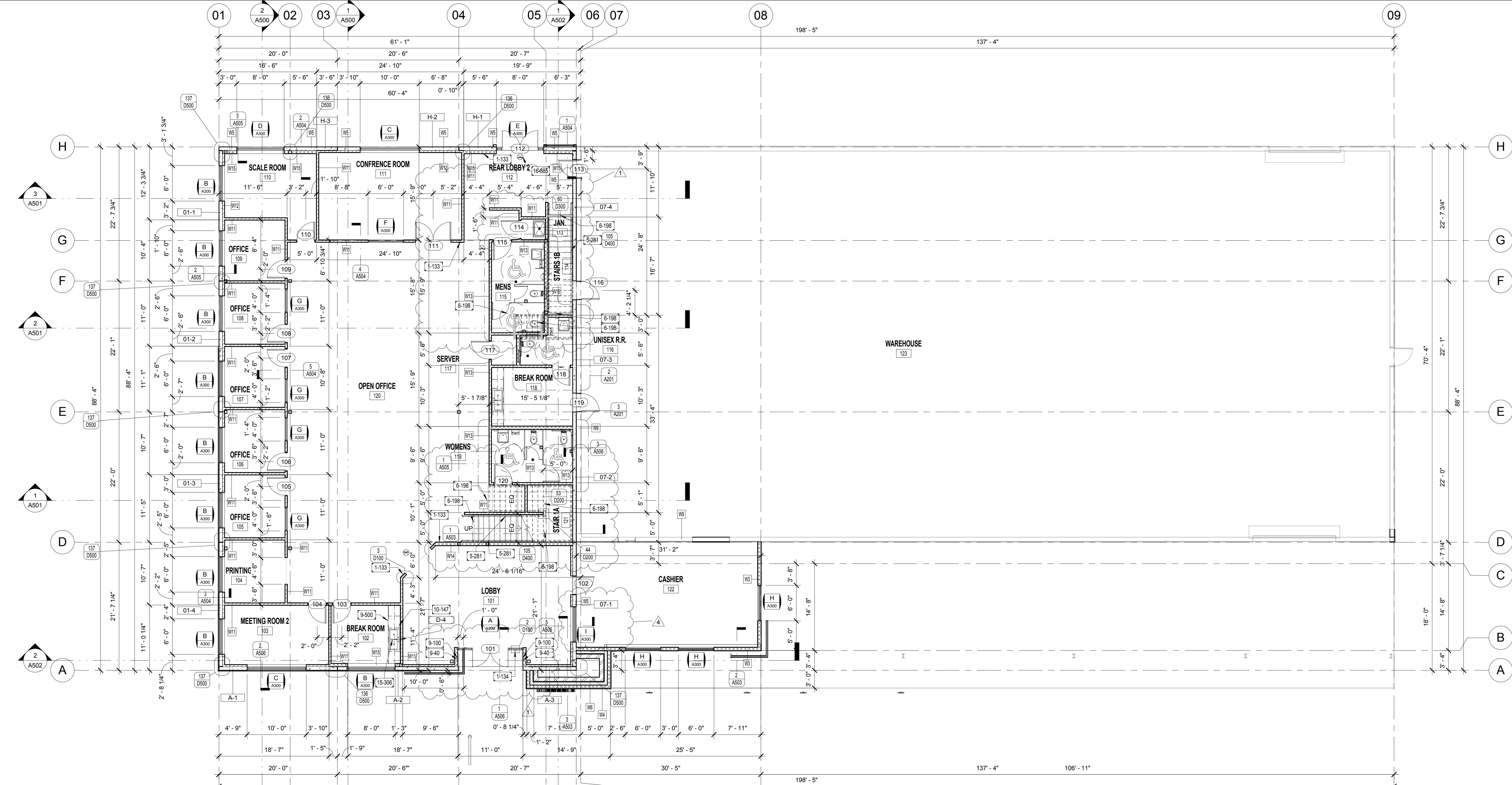
Recycling Center For:
HOISTON INT'L ENTERPRISES INC.

13-940
6-31-14

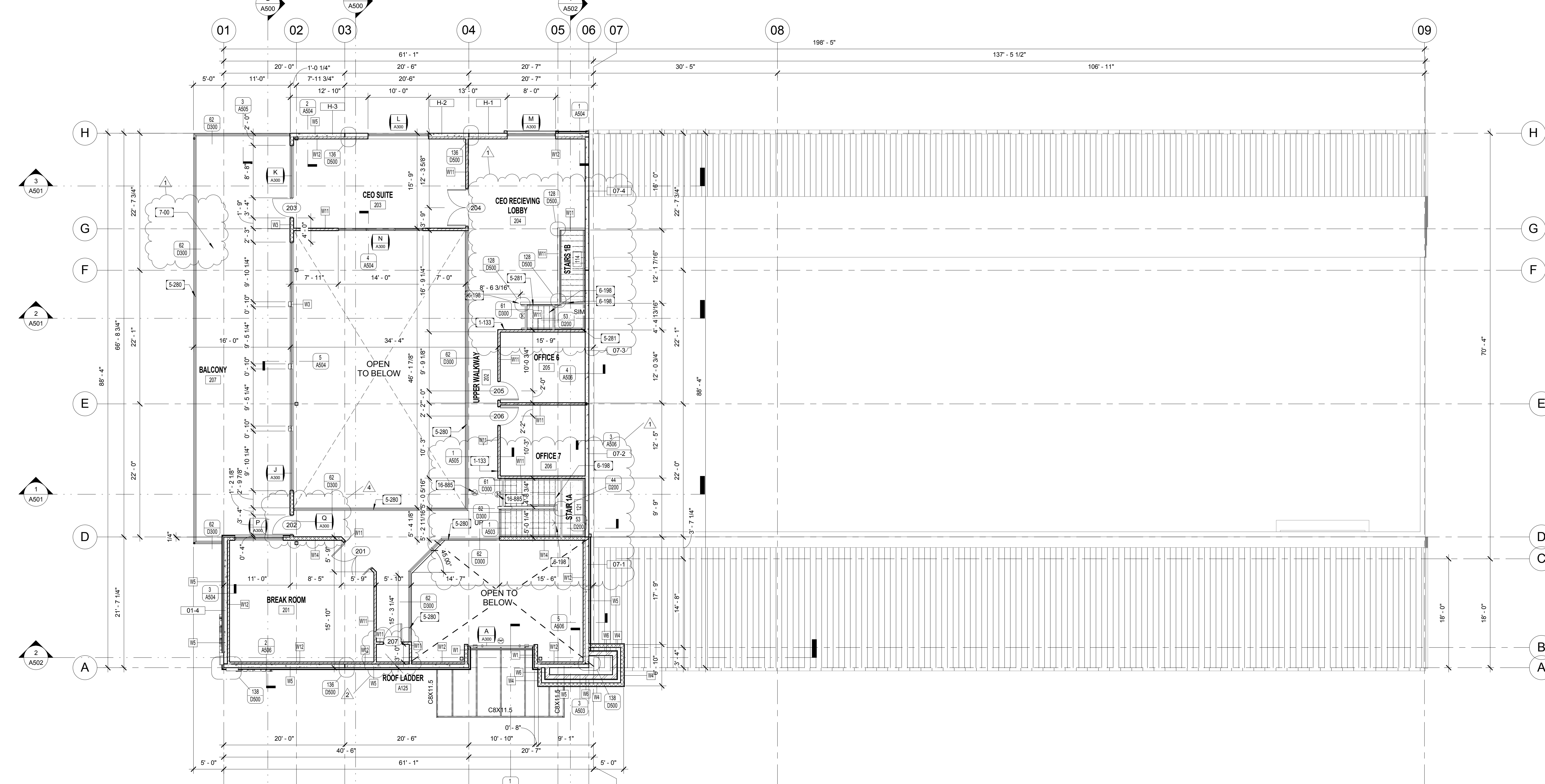
2192 W. HIGHLAND AVE. SAN BERNARDINO, CA 92407

A201

Floor Plans



6 FLOOR PLAN - LEVEL 1
1/8" = 1'-0"



4 FLOOR PLAN - LEVEL 2
1/8" = 1'-0"